



- TASTE THE DIFFERENCE -

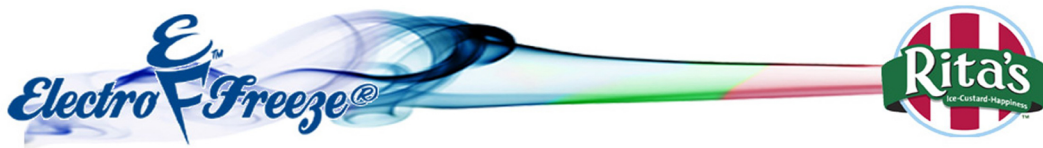
## MODEL RFC3

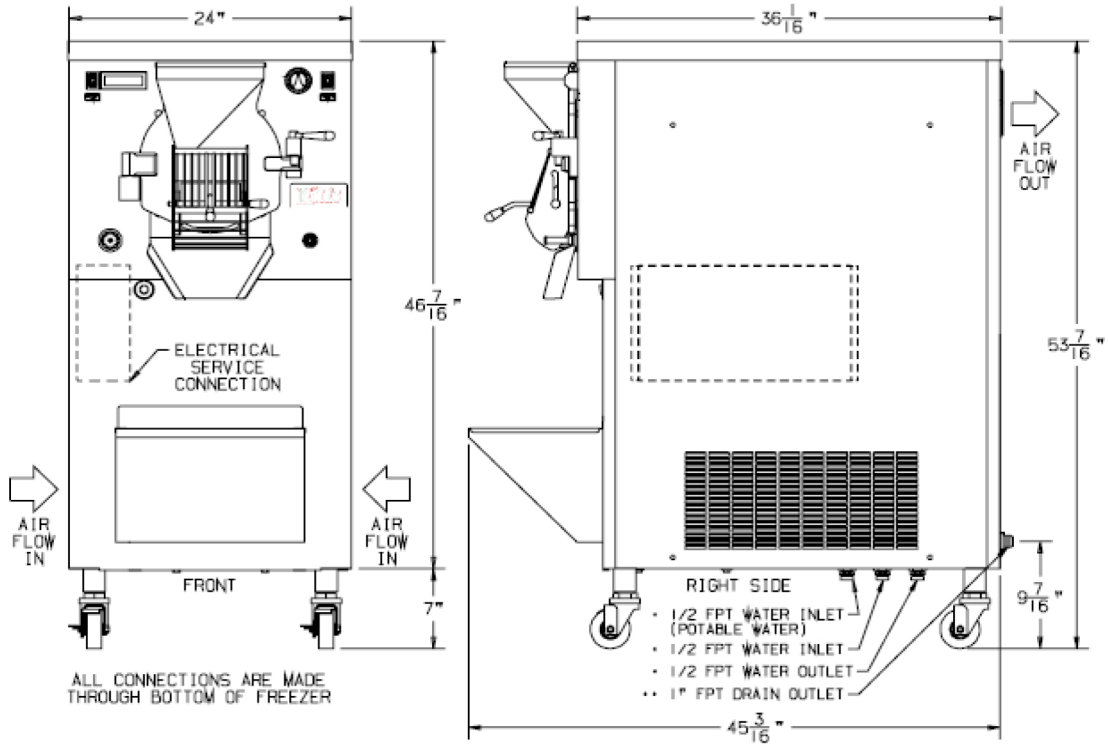
This batch freezer was developed in 2003 by Electro Freeze and Rita's Water Ice. It is a proprietary machine designed strictly for the Rita's Water Ice product.

### The RFC-3 Advantage

- **Over 1,000** currently in use in the Rita's System
- **Cam Door latch** provides quick interior access
- **Unique Door design** allows for unobstructed product extraction so not to impede fruit or particulates in recipes
- **Exclusive Auger Design** gently blends, reducing agitation and maintain Rita's standard of smooth, finer grain of ice
- **Built-in Faucet** with flex hose for fast and easy cleaning
- **Simple built-in drain system** streamlines cleaning and operation time with no lifting of buckets
- **Consistency meter** designed with Rita's Ice consistencies to give operator a guide for production and extraction
- **Auger and Dispensing Head Design** leads to excellent product extraction and less flavor overlap.
- **Quality scraper blades** with four year life to lower replacement costs
- **Digital timer** with audible alarm
- **Experience Tells** Electro Freeze has been manufacturing quality frozen treat machines since 1929. Superior engineering, product innovations, sturdy construction, quality craftsmanship and dependable performance are Electro Freeze hallmarks.
- **Superior Service Support** backed by a world-wide distributor network with over 28 years of experience with the Rita's brand

## RFC-3 BATCH FREEZER





**MODEL RFC-3 SPECIFICATIONS**

Due to continual product improvements all specs are subject to change without notice.



**RFC-3**

<b>Weights</b>	<b>lbs.</b>	<b>kgs.</b>
Net	605	274
Crated	695	315
	<b>cu.ft.</b>	<b>cu.m.</b>
Volume	58.42	1.65
<b>Dimensions</b>	<b>in.</b>	<b>cm.</b>
Width	24	61.44
Depth	36-1/16	61.60
Height	53-7/16	170.50

<b>Electrical</b>	<b>Recommended Breaker Size</b>	<b>NEMA Plug</b>	<b>Poles (P) Wires (W)</b>
208-230/60/1 Water	30AMP	6-30P	2P, 2W

*Electrical characteristics other than above available on request from factory or local distributor. Check nameplate for exact electrical data.*

**Machines require a cold water supply and drain line**

**Bidding Spec**

Electrical: Volt \_\_\_\_\_ Hz \_\_\_\_\_ Ph \_\_\_\_\_  
 Cooling: \_\_\_\_\_ Neutral \_\_\_\_\_ Yes \_\_\_\_\_ No  
 Options: \_\_\_\_\_

**Electrical**

A dedicated electrical connection is required for both models. Manufactured to be permanently connected. See electrical chart for the proper requirement. Consult your local electrical codes for cord and receptacle specifications.

**Beater Motor**

RFC-3 3hp.

**Refrigeration Systems**

RFC-3 2hp. R404a.

**Freezing**

Cylinder Capacity: 1 Full Tub or 1/2 Tub of Rita's Ice

Certified and/or listed by:



\*UL listed and listed by Underwriters Laboratories under Canadian National Standard C22.2 No. 120-M91 (R2008)  
 \*\*Select Voltages @ 50HZ



**Electro Freeze div. of H.C. Duke & Son, LLC**

2116-8th Avenue, East Moline, Illinois 61244  
 Phone (309) 755-4553 • (800) 755-4545  
 FAX (309) 755-9858  
 E-mail: sales@electrofreeze.com • www. electrofreeze.com

**Authorized Distributor**



1001 Lower Landing Rd  
 Blackwood, NJ 08012  
 P: 800-853-8026 \* F: 856-227-0295  
 E: robert@sentryequipment.net  
 www.sentryequipment.net